



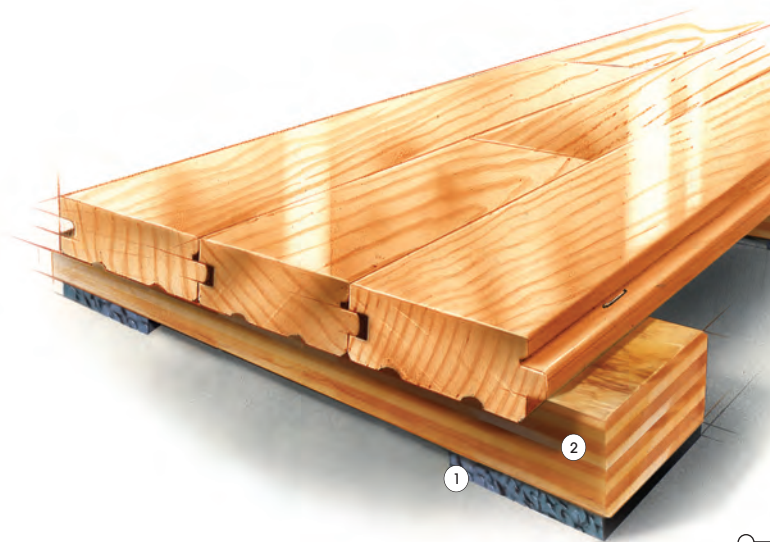
REZILLSLEEPER™

F L O A T I N G S Y S T E M

FLOATING
SYSTEM
○○○
REZILLSLEEPER

SYSTEM FEATURES AND BENEFITS

Floating sports floor system providing shock absorption, consisting in general of a vapor barrier, resilient Rezill pads, plywood sleepers, optional plywood subfloor, maple flooring, sanding, sealers, finishes, game lines and wall base.



- ① Rezill Pads
- ② Plywood Sleeper

SPECIFICATIONS

MANUFACTURING

ISO 9001:2008
CERTIFIED

SYSTEM TYPE

Floating

ANCHORAGE

No concrete attachment

SUBFLOOR CONSTRUCTION

Plywood Sleepers

RESILIENCE

Rezill Pads

RECYCLED CONTRIBUTION



RezillSleeper Subfloor System includes components with recycled content

SLAB DEPRESSION

25/32" (20 mm) flooring - 2 1/8" (54 mm)
33/32" (26 mm) flooring - 2 3/8" (60 mm)
Adjust if adding plywood

DIN STATUS



D-I-N
Meets or exceeds all the requirements of DIN 18032, part 2

TESTING LABORATORY



United States Sports Surfacing Laboratory

CERTIFIED TESTING



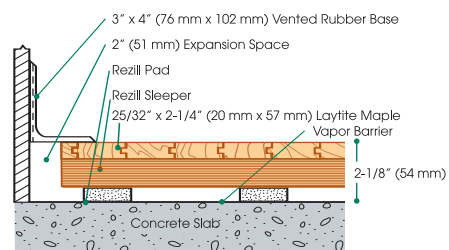
Laboratory test equipment calibrated and certified through the ISSS

GREEN STATUS

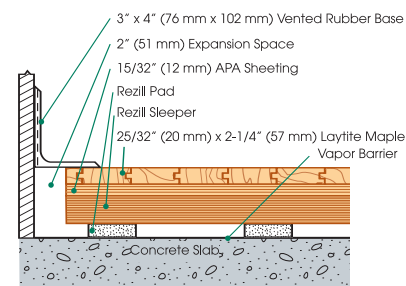


Managed forests, certification available

WALL BASE DETAIL (RezillSleeper)



WALL BASE DETAIL (RezillSleeper Subfloor)



EQUIPMENT DETAIL (optional accessory)

